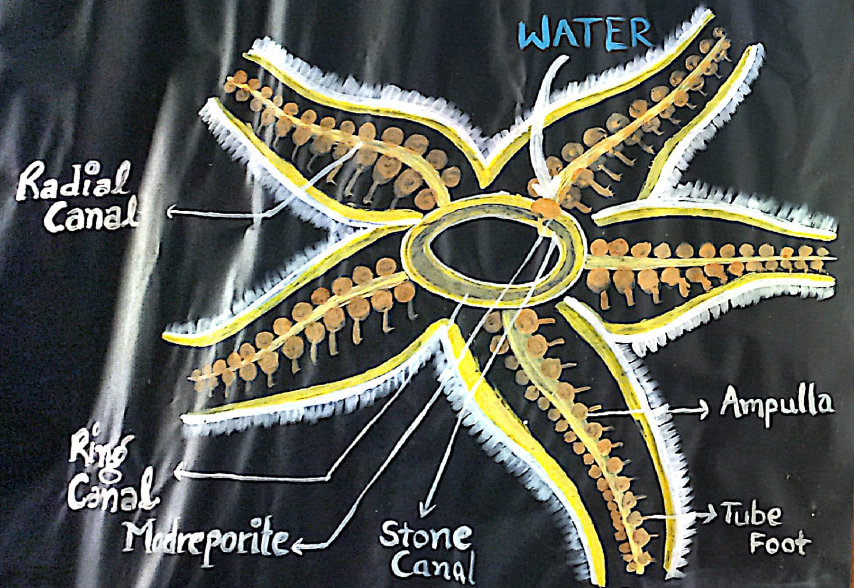
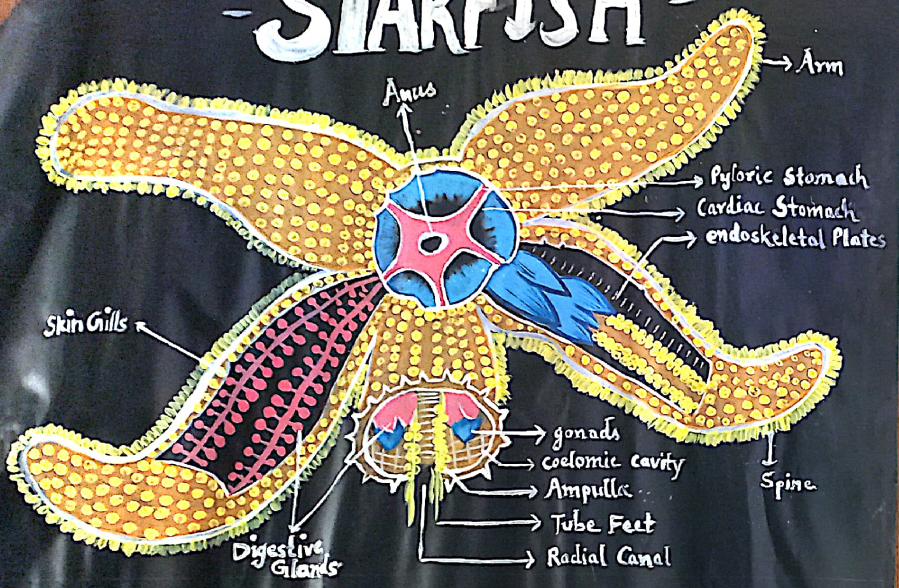


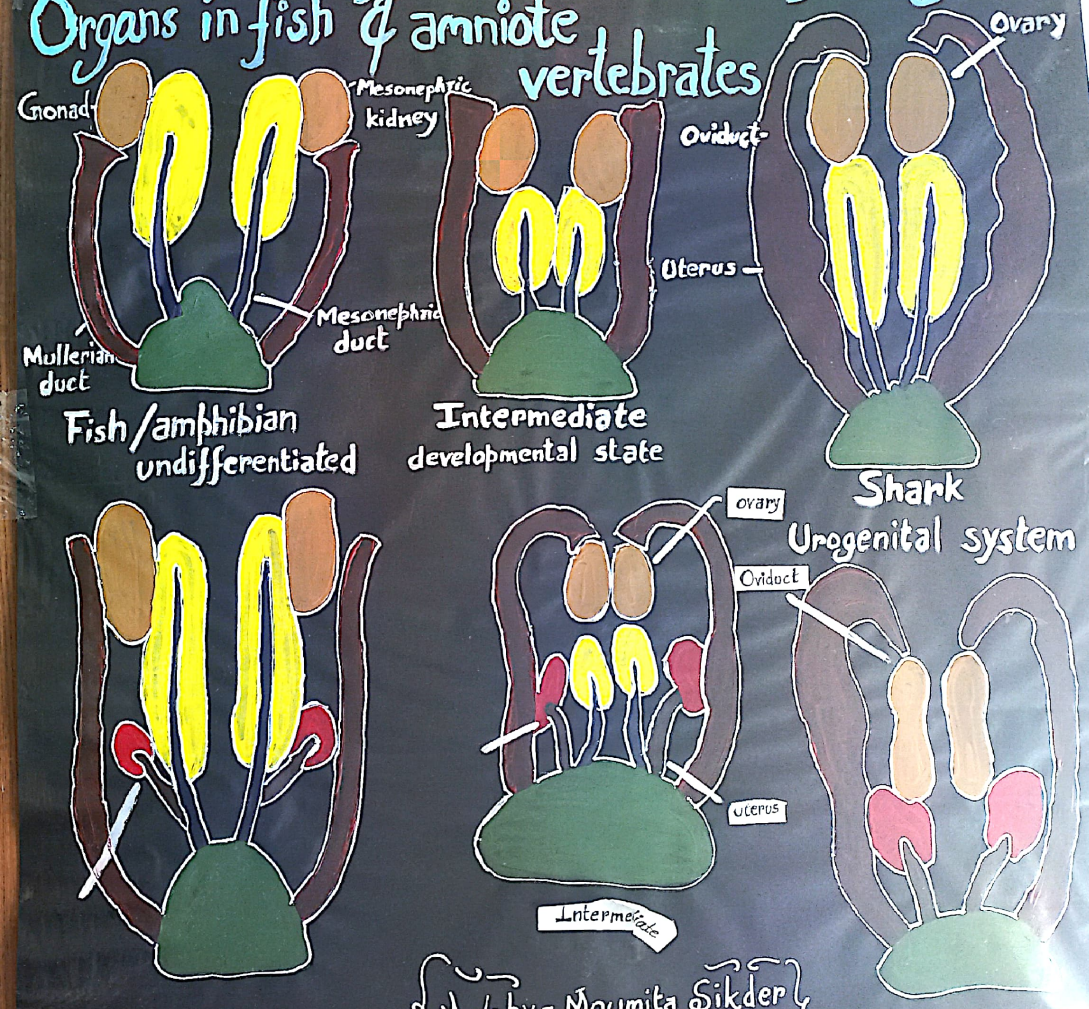
STARFISH



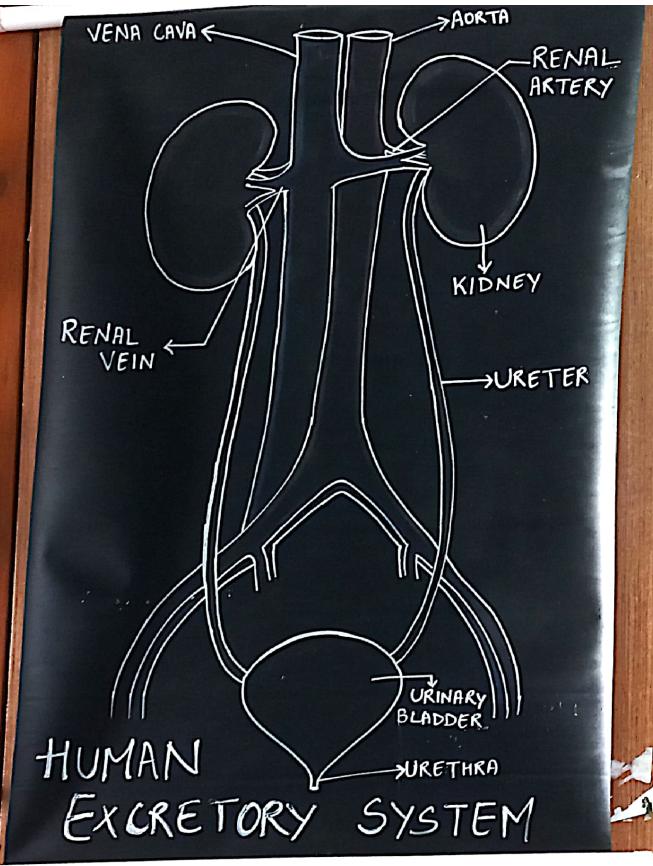
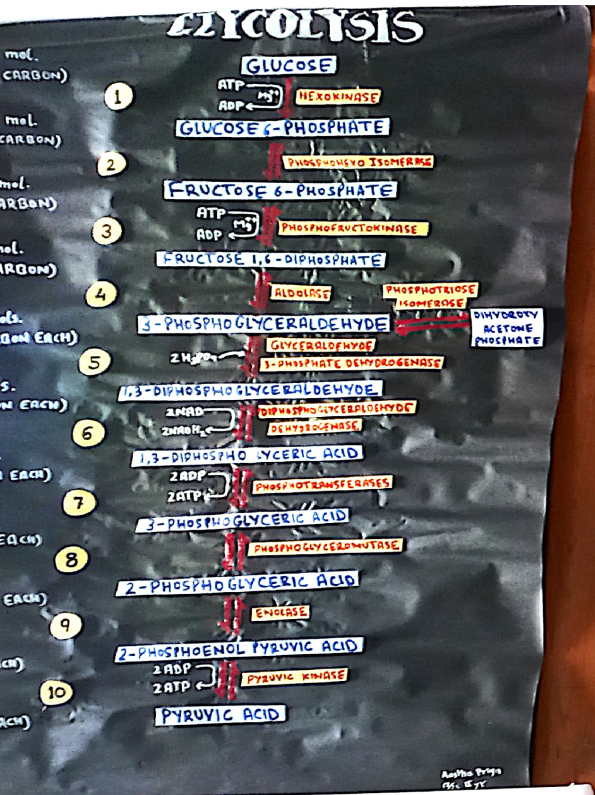
WATER VASCULAR SYSTEM - ASTERIAS

MADE BY :- YASHASWI SHARMA & MONICA KUMARI (2017-18)

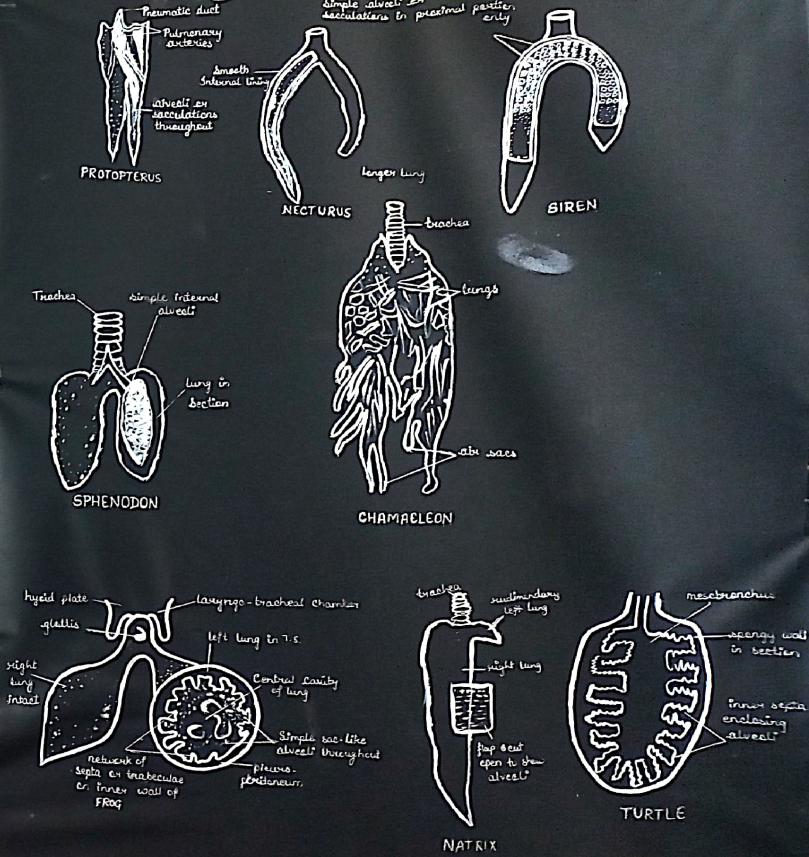
Comparison of the development of Urogenital Organs in fish & amniote vertebrates



Made by - Moumita Sikder
BSC IInd yr

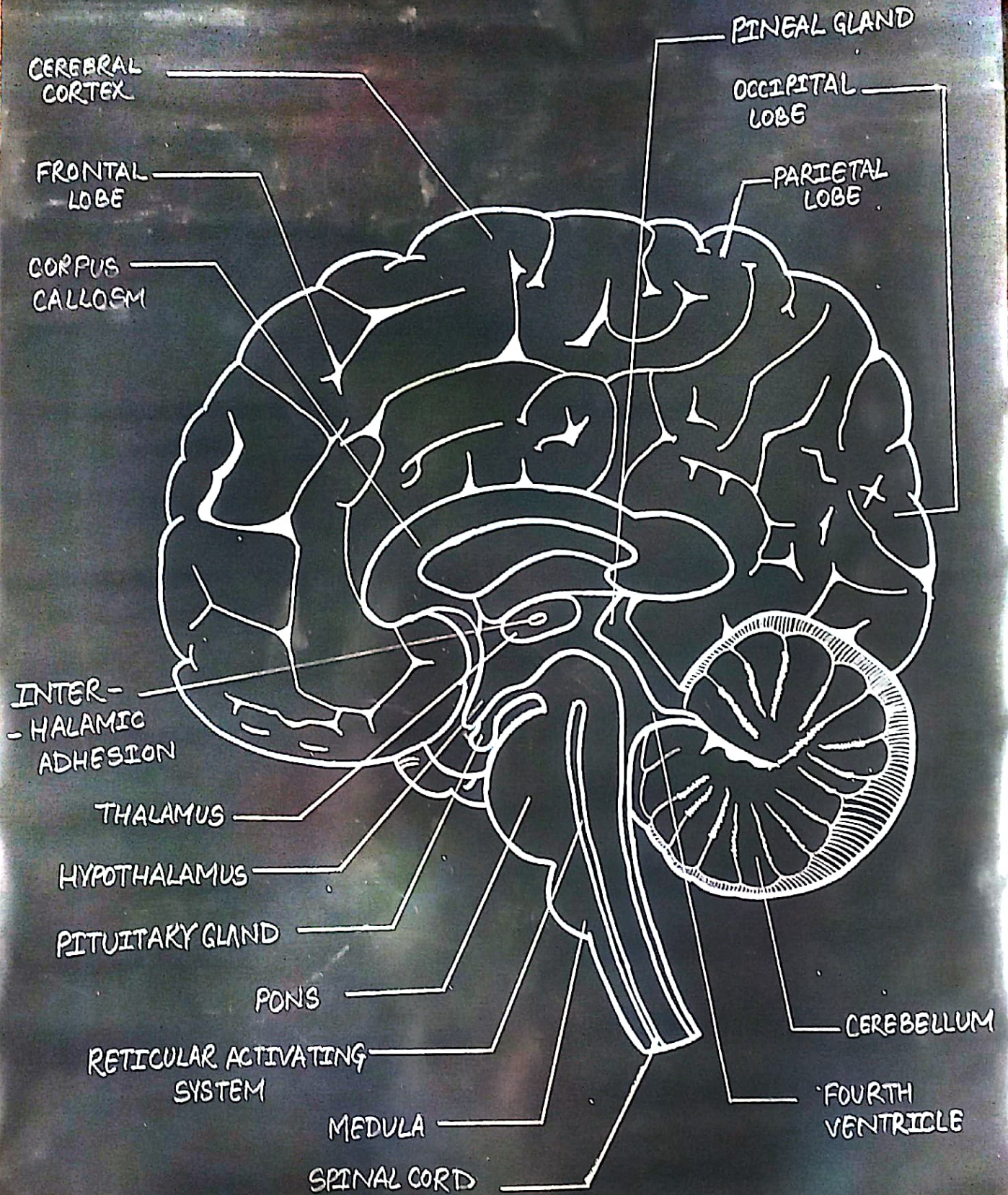


Comparative Account of Respiratory System in Mammals



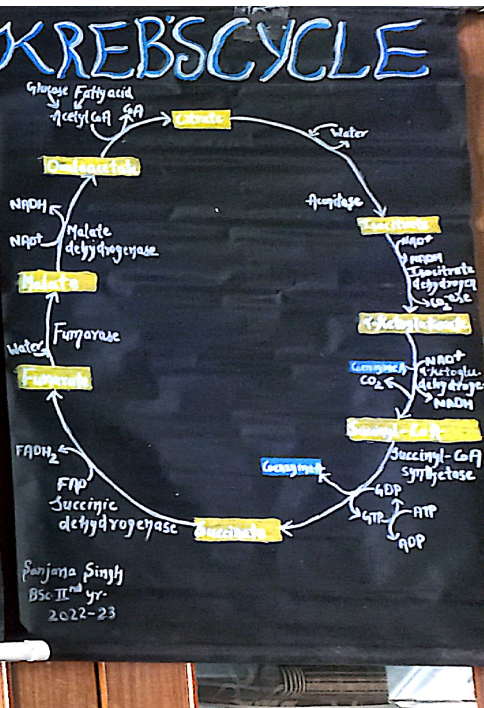
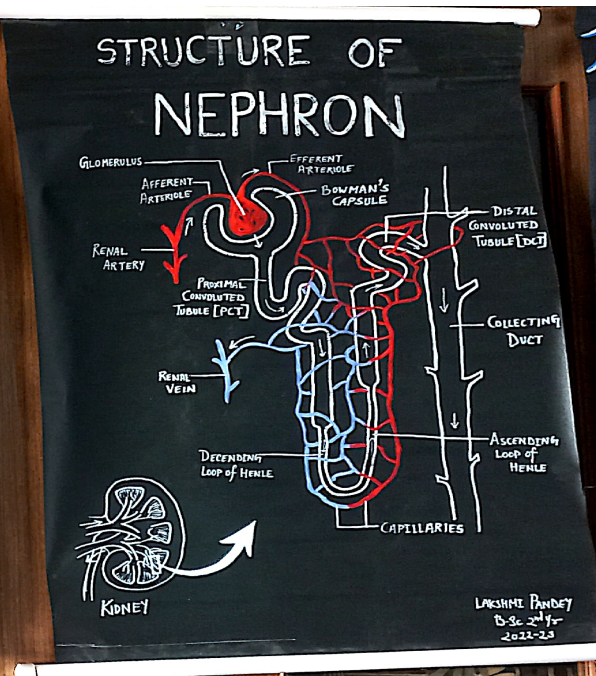
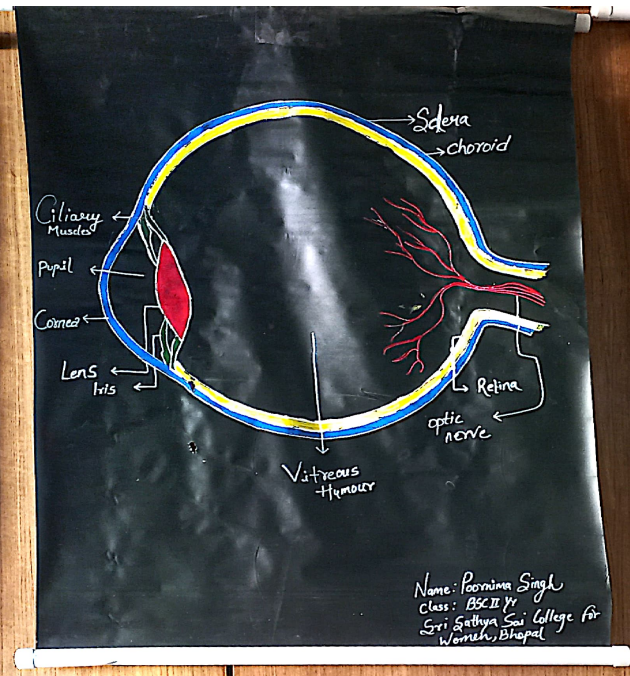
ZOOLOGY
 UNIFIED ZOOLOGY
 Environmental Studies
 SECOND EDITION
LIMNOLOGY
 TECHNOLOGY-4
 Book of Biotechnology R.C. DUBEY

BRAIN



VARIOUS PART OF BRAIN

Name :- Mahima Gaurav
Class :- B.Sc Iyr (2022-23)



MINICRY

Resemblance of an organism with its organ or object for some advantage

TYPES

- PROTECTIVE**
 - Mimicry adopted by a frog
 - Camouflaged butterfly
- AGGRESSIVE**
 - Mimicry adopted by predators
 - Common mimics in animals
- CONSCIOUS**
 - Common mimics of the form of their own body

Always Mimicry is an adaptive form of life to survive

HERDMANIA

Comparative account of brain

FOSSIL

```

    graph TD
      FOSSIL --> BODY_FOSSILS[BODY FOSSILS]
      FOSSIL --> TRACE_FOSSILS[TRACE FOSSILS]
      BODY_FOSSILS --> UNALTERED_REMAINS[UNALTERED REMAINS]
      BODY_FOSSILS --> ALTERED_REMAINS[ALTERED REMAINS]
      UNALTERED_REMAINS --> SOME_ORIGINAL_MATERIAL[SOME ORIGINAL MATERIAL]
      UNALTERED_REMAINS --> NO_ORIGINAL_MATERIAL[NO ORIGINAL MATERIAL]
      ALTERED_REMAINS --> SOME_ORIGINAL_MATERIAL
      ALTERED_REMAINS --> NO_ORIGINAL_MATERIAL
      SOME_ORIGINAL_MATERIAL --> ENCASEMENT[ENCASEMENT]
      SOME_ORIGINAL_MATERIAL --> PRESERVATION[PRESERVATION]
      NO_ORIGINAL_MATERIAL --> REPLACEMENT[REPLACEMENT]
      NO_ORIGINAL_MATERIAL --> PRESERVATION_OF_CASTS[PRESERVATION OF CASTS]
      ENCASEMENT --> AMBER[AMBER]
      ENCASEMENT --> TAR[TAR]
      ENCASEMENT --> COPALINIZATION[COPALINIZATION]
      PRESERVATION --> PERMINERALIZATION[PERMINERALIZATION]
      PRESERVATION --> REPLACEMENT_OF_MATERIALS[REPLACEMENT OF MATERIALS]
      PRESERVATION --> PRESERVATION_OF_CASTS
      PRESERVATION --> CALCIUMIZATION[CALCIUMIZATION]
      PRESERVATION --> SILICIFICATION[SILICIFICATION]
      PRESERVATION --> PROTEINIZATION[PROTEINIZATION]
      PRESERVATION --> SIMULATIONS[SIMULATIONS]
  
```

METHODS OF FOSSILIZATION

ALIMENTARY CANAL OF HERDMANIA

CONSUMABLES

ADRENAL GLAND

Thyroid Gland

NUCLEOSOME

OF KIDNEY OF RABBIT

AMPHIOXUS

Anatomy of Frog Brain - Dorsal View

CONSUMABLES

GLASSWARES

GLASSWARES SPECIMENS

RESPIRATORY SYSTEM OF BIRDS

SANSKRIT

Structure of Eye

Name: Parvina Singh
Class: BSc II yr
Date: 20/11/23

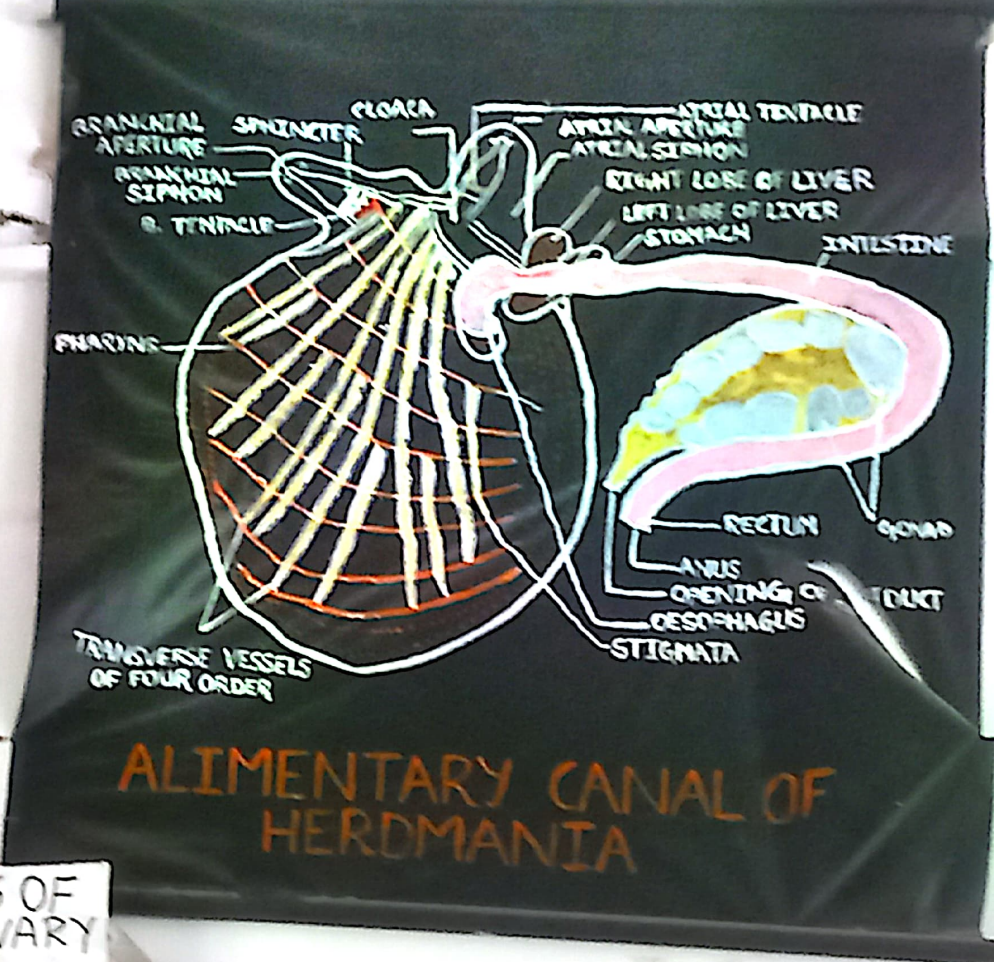
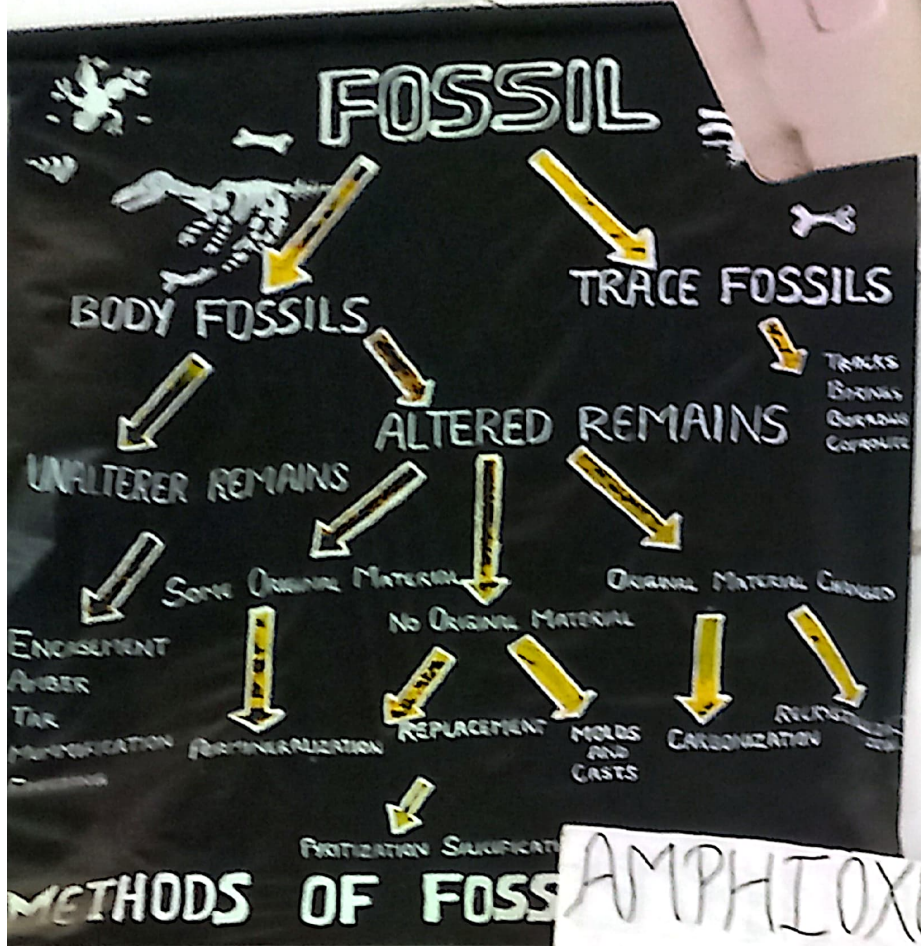
STRUCTURE OF NEPHRON

Name: Parvina Singh
Class: BSc II yr
Date: 20/11/23

KREB'S CYCLE

Name: Parvina Singh
Class: BSc II yr
Date: 20/11/23

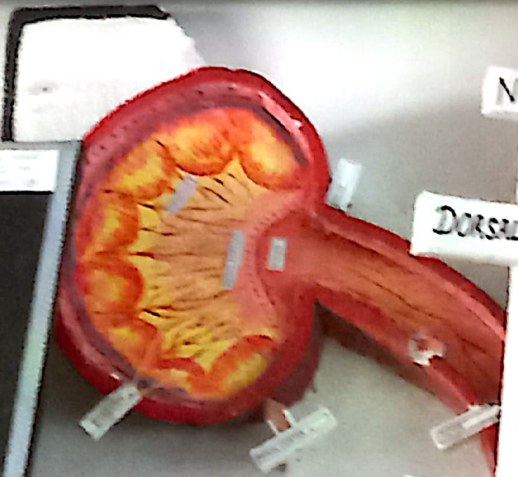
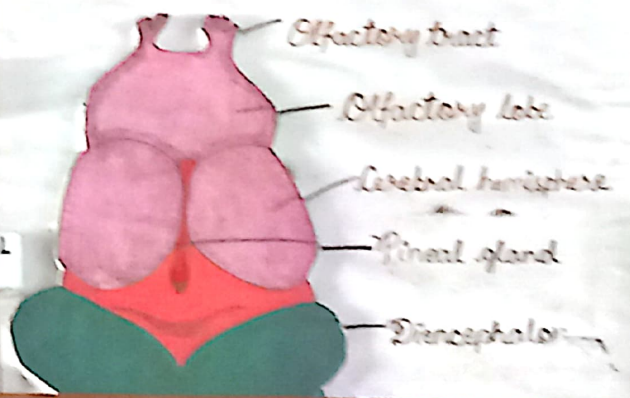
BRAIN



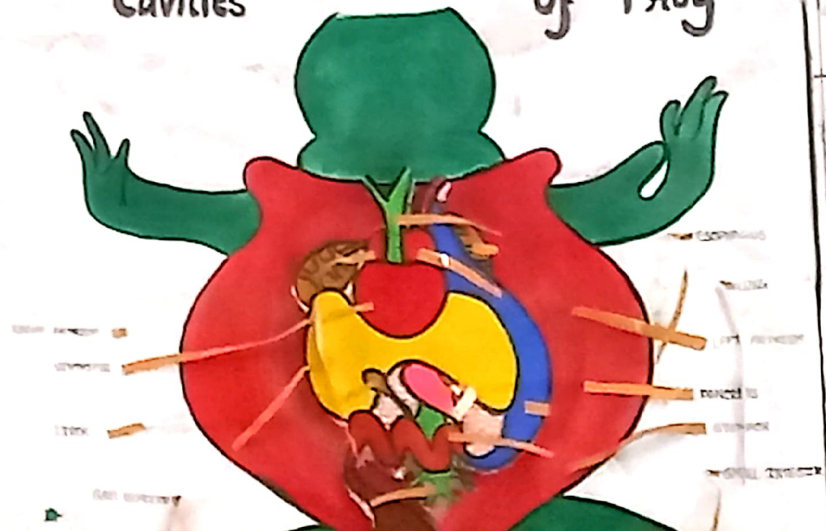
AMPHIOXUS T.S OF OVARY



Anatomy of Frog Brain - Dorsal view



Abdominal And Chest Cavities of Frog



PLACENTAL MAMMALS



STRUCTURE

